

# TO GROW AND EVOLVE IN THE MIDST OF FLUX

"[God] went in the way before you to search out a place for you to pitch your tents, to show you the way you should go, in the fire by night and in the cloud by day."

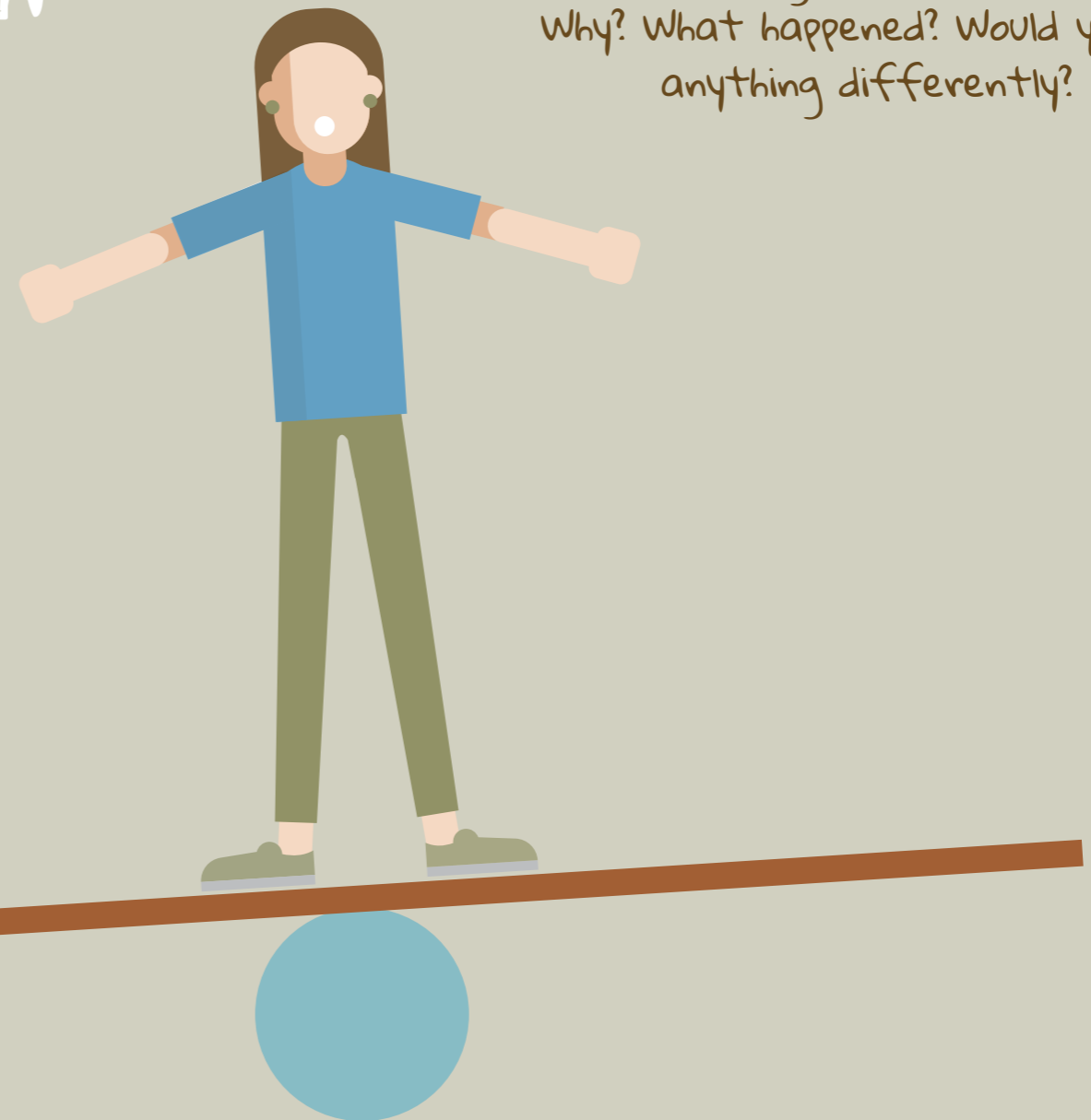
Deuteronomy 1:33, NKJV

"All life lives off-balance in a world that is open to change. And all of life is self-organizing. We do not have to fear disequilibrium, nor do we have to approach change so fearfully. Instead, we can realize that, like all life, we know how to grow and evolve in the midst of constant flux. There is a path through change that leads to greater independence and resiliency. We dance along this path by maintaining a coherent identity and by honoring everybody's need for self-determination."  
(Margaret Wheatley, "Leadership and the New Science: Discovering Order in a Chaotic World")

## PRAYER

God, it seems there is nothing that is not changing. But you never change. You are my constant and my strength. Help me stand strong before those you have placed in my care.

When was the last time you were caught off-balance? Why? What happened? Would you do anything differently?



New additions to **GBHEM's** Leader **Devotions Series** will be added to the agency's **E-Resources** webpage every Wednesday, April 8 – June 10, 2020.

Have a question about higher education and ministry during a global health crisis? Submit it to our **E-Resources FAQ page**.