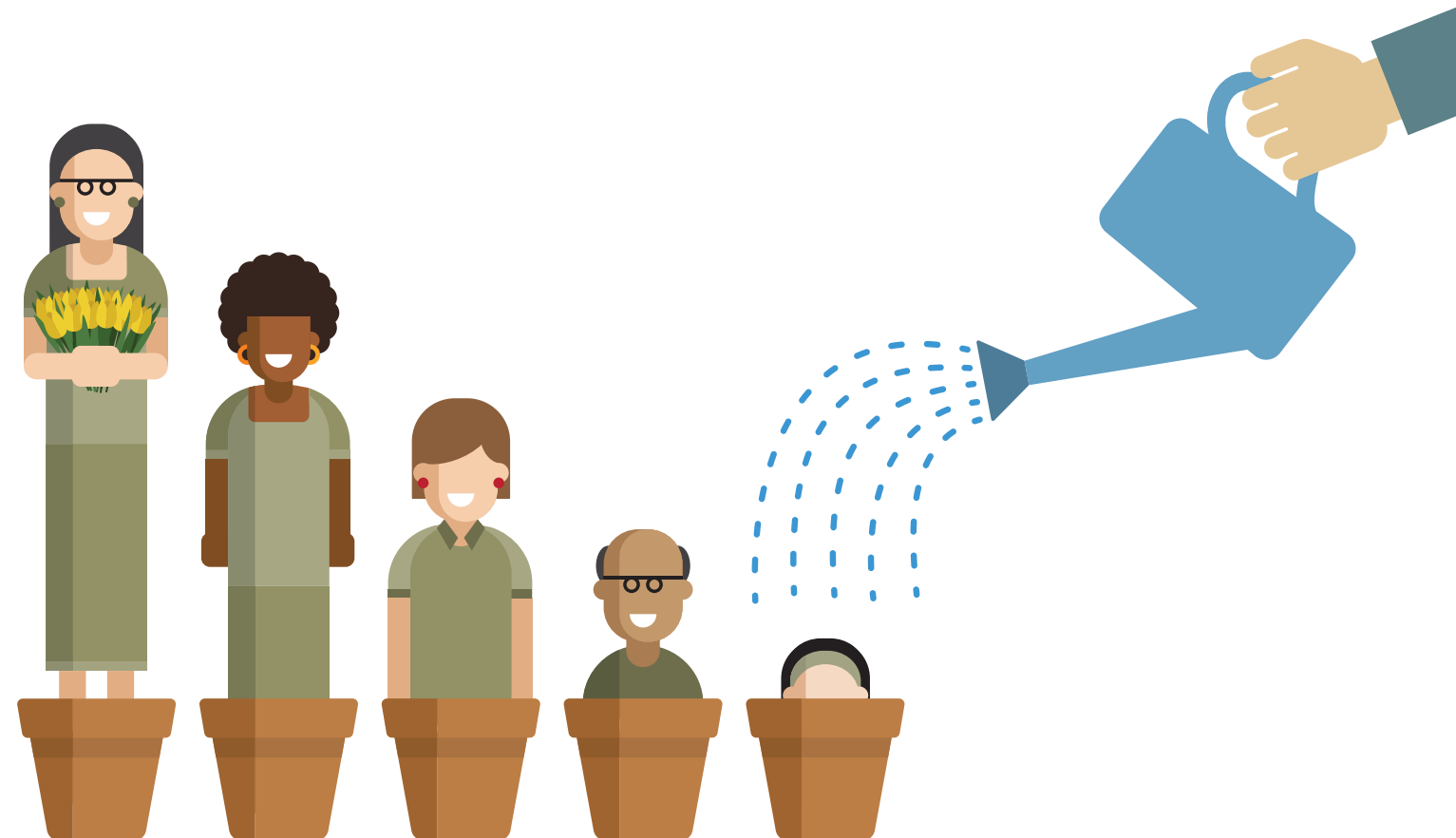


*“What do you see in the
way of generative relationships,
OF NEW OPENINGS AND
SURPRISING CONNECTIONS,
in your communities?
Where does it hurt?
And what gives you comfort?
WHERE ARE YOU PLANTING AND
FINDING HOPE AND COURAGE?”*

Ruby Sales

What relationships give you life? Why do you think those relationships give you life?
What can you do to strengthen those life-breathing relationships?



New additions to **GBHEM's** Candidate and Aspiring Clergy **Devotions Series** will be added to the agency's **E-Resources** webpage every Thursday, April 9 – June 11, 2020.

Have a question about higher education and ministry during a global health crisis? Submit it to our **E-Resources FAQ page**.